



PAVANATMA COLLEGE

MURICKASSERRY

7.1.1 MEASURES INITIATED BY THE INSTITUTION FOR THE PROMOTION OF GENDER EQUITY DURING THE YEAR 2022-23.

PAVANATMA COLLEGE

MURICKASSERY

ENVIRONMENTAL CONSCIOUSNESS AND SUSTAINABILITY

METRIC No.7.1.1

Gender equality is an area that the college has consistently recognized as important.

The organization maintains a high priority on women's empowerment and gender equality.

It involves educating individuals about gender equality and the necessity of eradicating gender discrimination. As a result, different committees and cells that oversee gender-sensitization

Forum, the Anti-Ragging Cell, the Prevention of Sexual Harassment Cell, etc. are involved in gender-sensitive issues and themes through a variety of initiatives.

At the College, programmes for promotion of gender equality are from time to time offered. The College really employs an open and transparent merit-based selection process, regardless of gender. The

The organization maintains a high priority on women's empowerment and gender equality.

programmes begin to teach students and faculty members pertaining to gender sensitivity. Organizations like the Women's

majority of seats are still available through the university's single-window process, or

CAP (Centralized Allotment Process) of the Mahatma Gandhi University, Kottayam.

SPECIFIC FACILITIES & PROGRAMMES

- Internal Compliance Committee
- Lady Welfare Officer
- Women Cell
- Canteen and Store
- Surveillance Cameras
- Grievance Redressal and Anti-Harassment Cell
- Counselling
- Common Rooms
- Gender Equity and Sensitization in Curricular Activities
- Co-curricular Activities



**7.1.1 MEASURES INITIATED BY THE INSTITUTION FOR THE PROMOTION OF GENDER
EQUITY DURING THE YEAR 2022-23.**

A. Safety and security

The following are the safety and security measures in the college for the girl students:

1. Internal compliance committee under the chairmanship of the Principal of the college (ICC) – There is anti-sexual harassment complaint, if any, the victim can approach ICC.

2. Lady Welfare Officer – for ensuring the welfare and safety of the girl students/ staff

3. Women Cell – for the development and to aware the students about their rights, duties, protections etc.

4. Hostel

There are two hostels with caring and attentive wardens and suitable security precautions for girls.

5. Canteen and Store

The canteen creates a comfortable setting in which to eat and relax. The College canteen is a place for both sexes to mingle and interact socially.

6. Surveillance Cameras

Installation of surveillance cameras at various viewpoints ensure safety.

7. Grievance Redressal and Anti-Harassment Cell

It is a process for redressing stakeholders' grievances and ensuring gender equity and justice for both sexes.

B. Counselling

Professional counsellors or specialists from external, to give gender sensitization

counselling at various levels at our college under the direction of the counselling cell. Under the mentoring cell, a strong mentor-mentee relationship is upheld to offer academic and personal guidance. The contributions of student mentoring cell are also remarkable.

Internal and External Councilors

Internal Councilors

1. Dr. Sr. Jolly KV

Assistant Professor & Head

Department of English

Pavanatma College

Murickassery

2. Dr. Sonia Jose

Assistant Professor

Department of Malayalam

Pavanatma College

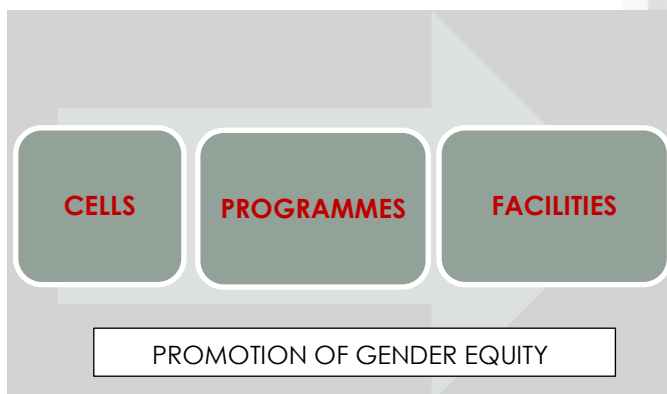
Murickassery

External Councilor

1. Sr. Nithiya CMC M.Sc. Psychology, MSW

Carmelgiri Provincial House

Adimally



7.1.1 MEASURES INITIATED BY THE INSTITUTION FOR THE PROMOTION OF GENDER EQUITY DURING THE YEAR 2022-23.

C. Common Rooms

1. Girls retiring room – furnished retiring room with the facility of incinerator.
2. Washing and Toilet area

D. Gender Equity and Sensitization in Curricular Activities

1. The curriculum of the college includes 18 courses that specifically address gender-related concerns.

2. In the MA Malayalam, MA History, and BA English programmes, there are specialised papers that address gender theories and gender issues.

3. There are 31 women faculty on the rolls which is 46.96 % of the total faculty.

4. Gender Sensitization Policy

E. Co-curricular Activities

1. Gender sensitivity is imparted through various programmes organised by clubs and associations.

2. Major committees and cells like Women's Cell, Anti-ragging cell, Internal Complaints Committee (ICC), NSS, NCC, IQAC and the Student Academic Support Cell organise routine programmes on gender related themes.

3. The college conducts gender awareness, anti-ragging and anti-sexual harassment campaigns on different occasions, particularly during student induction programmes.

4. International Women's Day is celebrated with talks, discussions, exhibitions etc. Students participate in talk shows, sessions on financial security, physical safety, legal security, cyber security and medical awareness.

FACILITIES FOR WOMEN ON CAMPUS

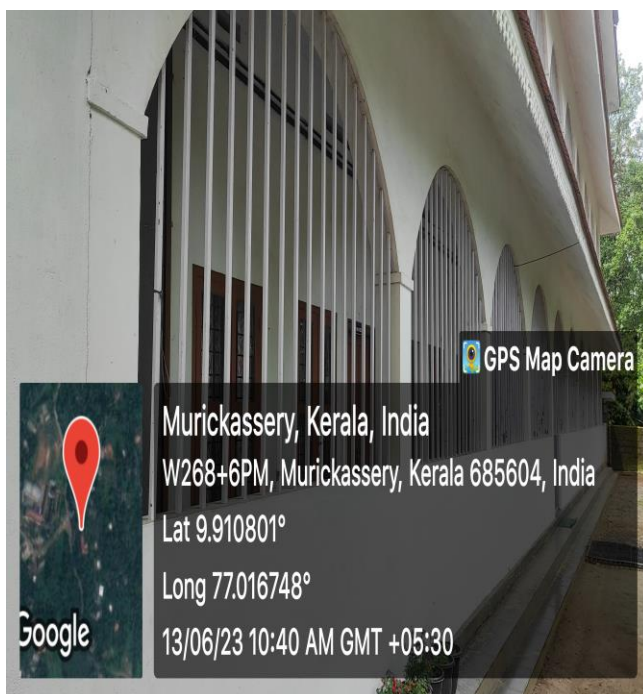
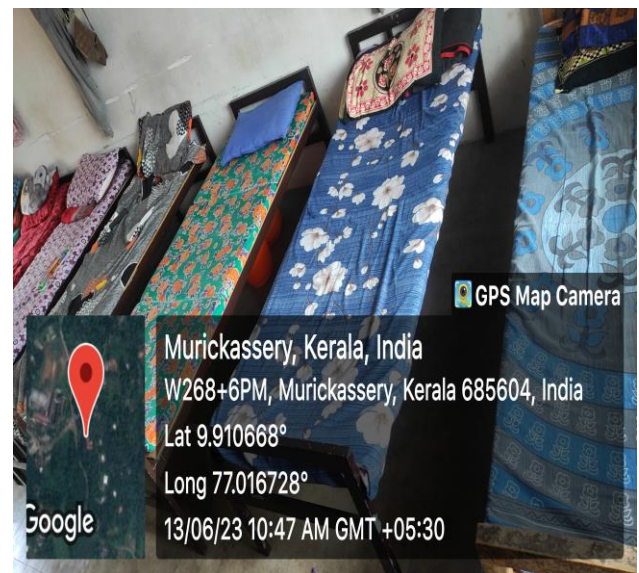


COLLEGE HOSTEL - I

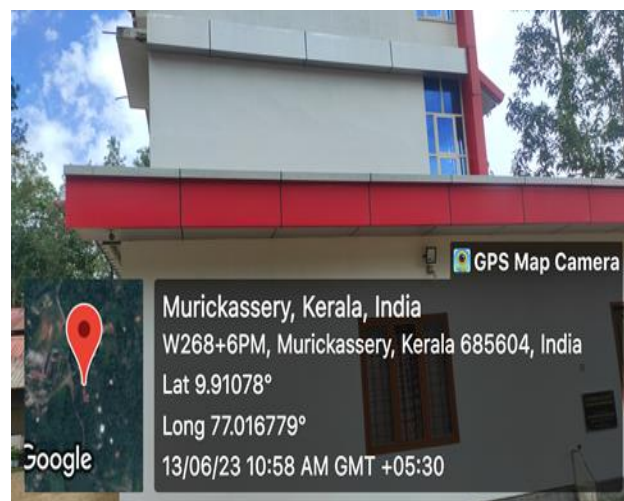
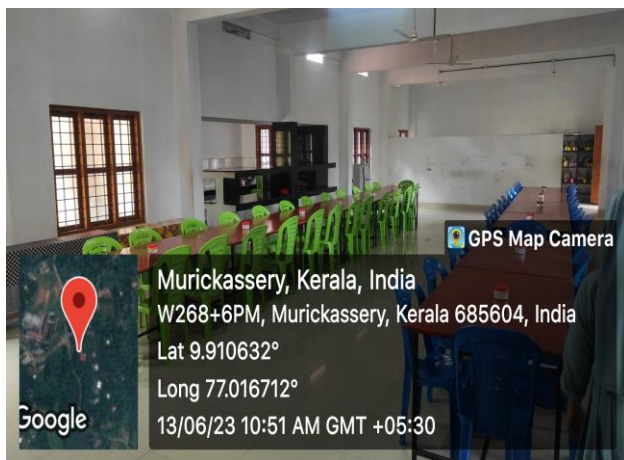


7.1.1 MEASURES INITIATED BY THE INSTITUTION FOR THE PROMOTION OF GENDER EQUITY DURING THE YEAR 2022-23.

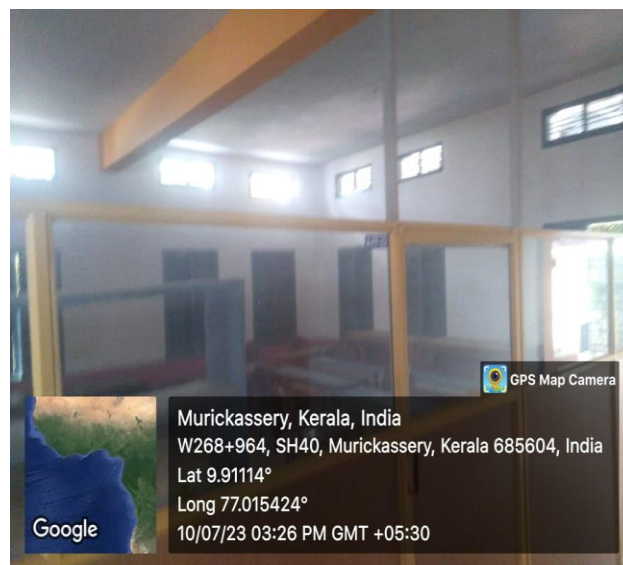
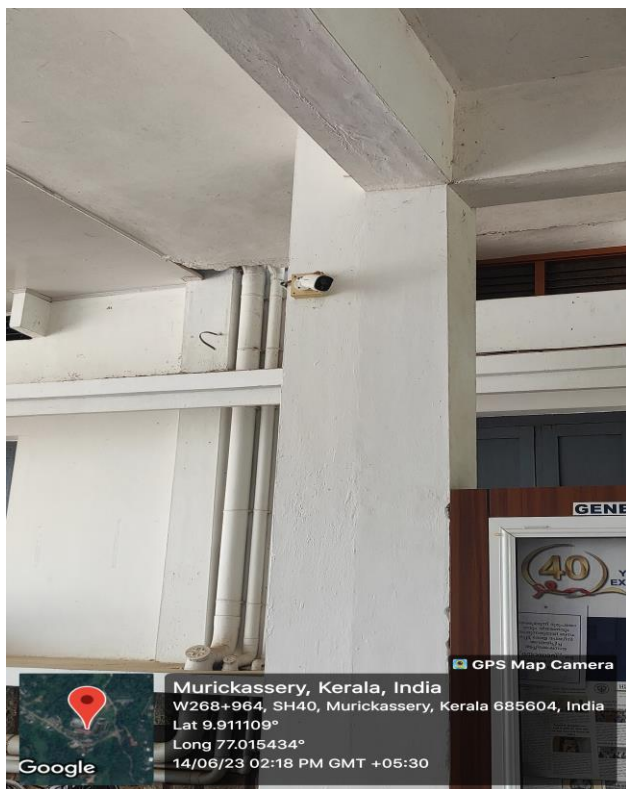
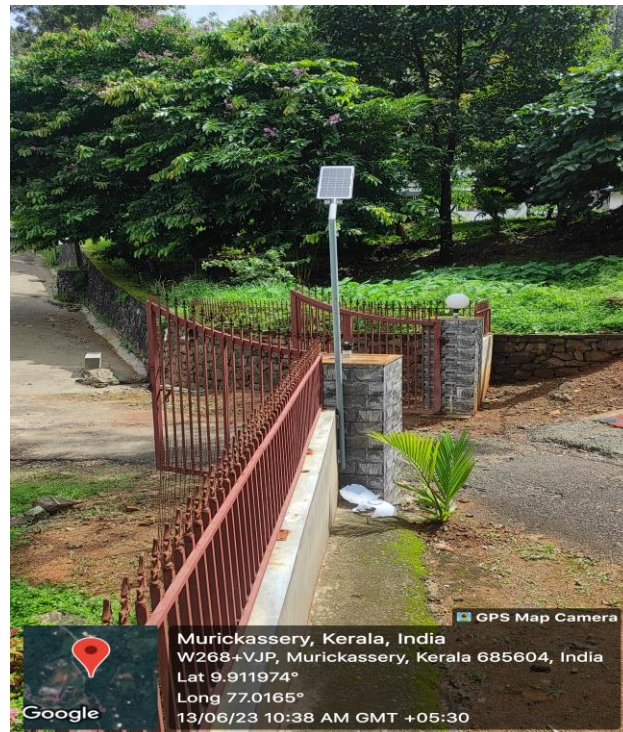
COLLEGE HOSTEL-II



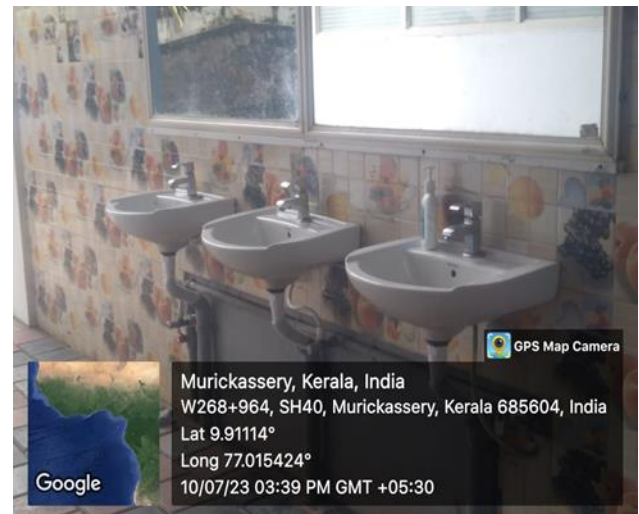
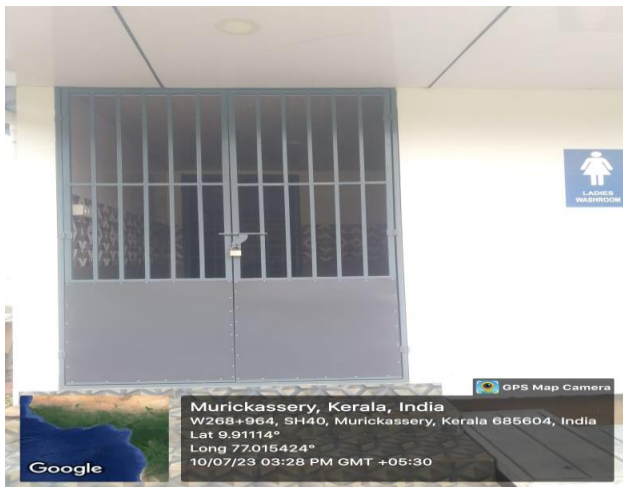
7.1.1 MEASURES INITIATED BY THE INSTITUTION FOR THE PROMOTION OF GENDER EQUITY DURING THE YEAR 2022-23.



7.1.1 MEASURES INITIATED BY THE INSTITUTION FOR THE PROMOTION OF GENDER EQUITY DURING THE YEAR 2022-23.



7.1.1 MEASURES INITIATED BY THE INSTITUTION FOR THE PROMOTION OF GENDER EQUITY DURING THE YEAR 2022-23.



7.1.1 MEASURES INITIATED BY THE INSTITUTION FOR THE PROMOTION OF GENDER EQUITY DURING THE YEAR 2022-23.

